

Sync Panel in New Exalate

Last Modified on 04/27/2026 7:11 am EDT

The Sync Panel is a Chrome and Edge browser extension that brings Exalate sync visibility and actions directly into your system. Instead of logging in to the Exalate app or admin console to check the sync status or trigger a sync, you can do it from the item you're already looking at.

Who's It For?

- **Exalate Admin/ Exalate Console Admin:** Configures which connections have Sync Panel access and which user domains can use it.
- **Exalate User/ End User** - Uses the sync panel day-to-day to view sync status and trigger sync actions from their system.

What Can the Exalate Sync Panel Do?

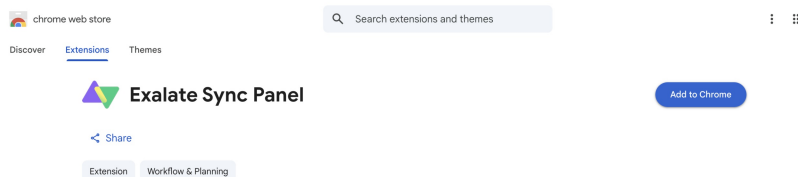
The Sync Panel is a place where Exalate users can:

- Start a manual sync
- Check the sync status
- Unlink synced items

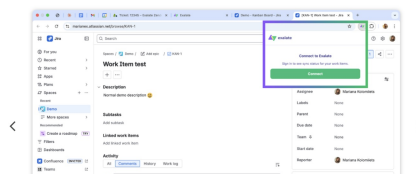
Imagine you're in your Jira instance, and you access the Sync panel. You can click on the Exalate icon in your browser Extensions panel and perform the above actions.

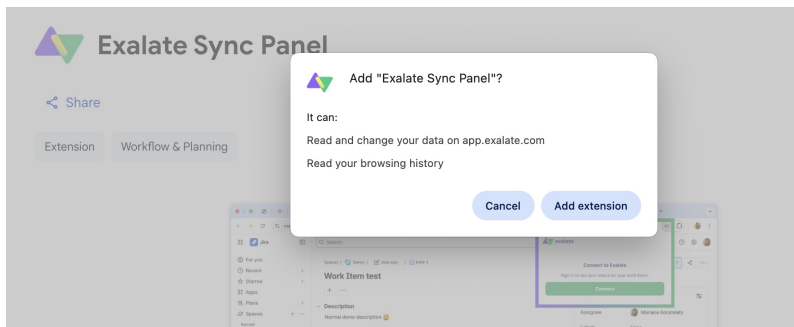
Install the Extension

1. Open the [Exalate Sync Panel](#) listing in the Chrome Web Store.
2. Click **Add to Chrome**

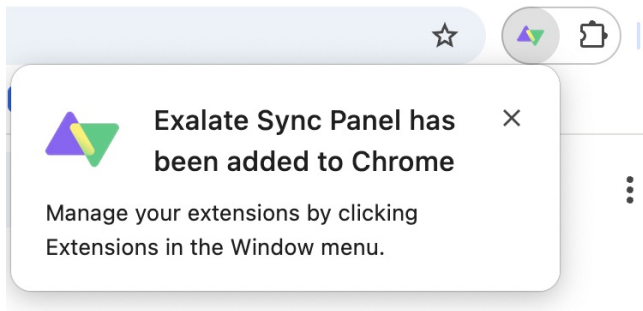


3. When prompted, click **Add extension** to confirm.





The Exalate icon appears in your browser toolbar. Pin it for easy access.



Note: The extension works on Chrome. Other browsers are not supported at this time.

Next Steps

- **Exalate Console Admins:** Enable Sync Panel access for a connection to configure which users can use the panel.
- **Exalate Users:** Use the Sync Panel to get started syncing items from your system.

ON THIS PAGE

Product

[Who's It For?](#)

[About Us](#)

[What Can the Exalate Sync Panel Do?](#)

[Glossary](#)

[Install the Extension](#)

[API Reference](#)

[Next Steps](#)

[Security](#)

[Pricing and Licensing](#)

Resources

[Subscribe for a weekly Exalate hack](#)

[Academy](#)

[Blog](#)

[YouTube Channel](#)

[Ebooks](#)

Still need help?

[Join our Community](#)

[Visit our Service Desk](#)

[Find a Partner](#)