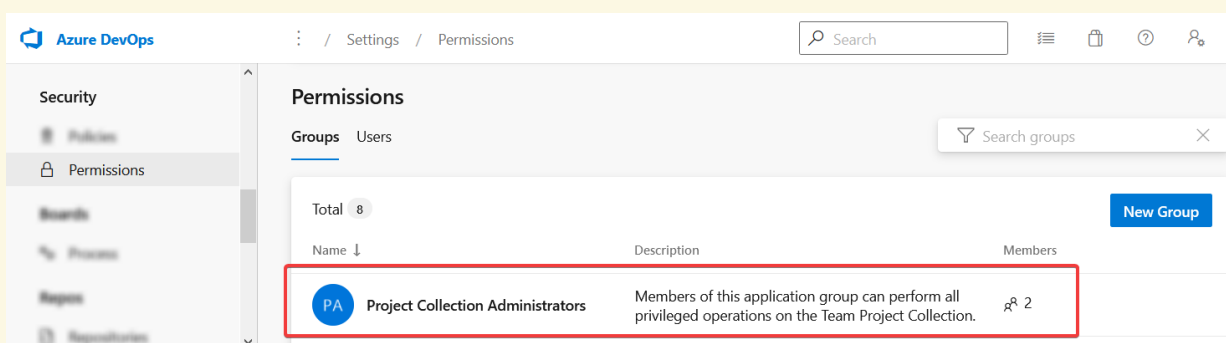


How to Generate Personal Access Token for Azure DevOps

Last Modified on 01/15/2026 7:37 pm EST

This article shows you how to generate a Personal access token (PAT). Personal access tokens are used to log in to Exalate for Azure DevOps.

Note: Make sure that the user generating the PAT belongs to the **Project Collection Administrators** group. You can check this in **Organization Settings → Permissions**.

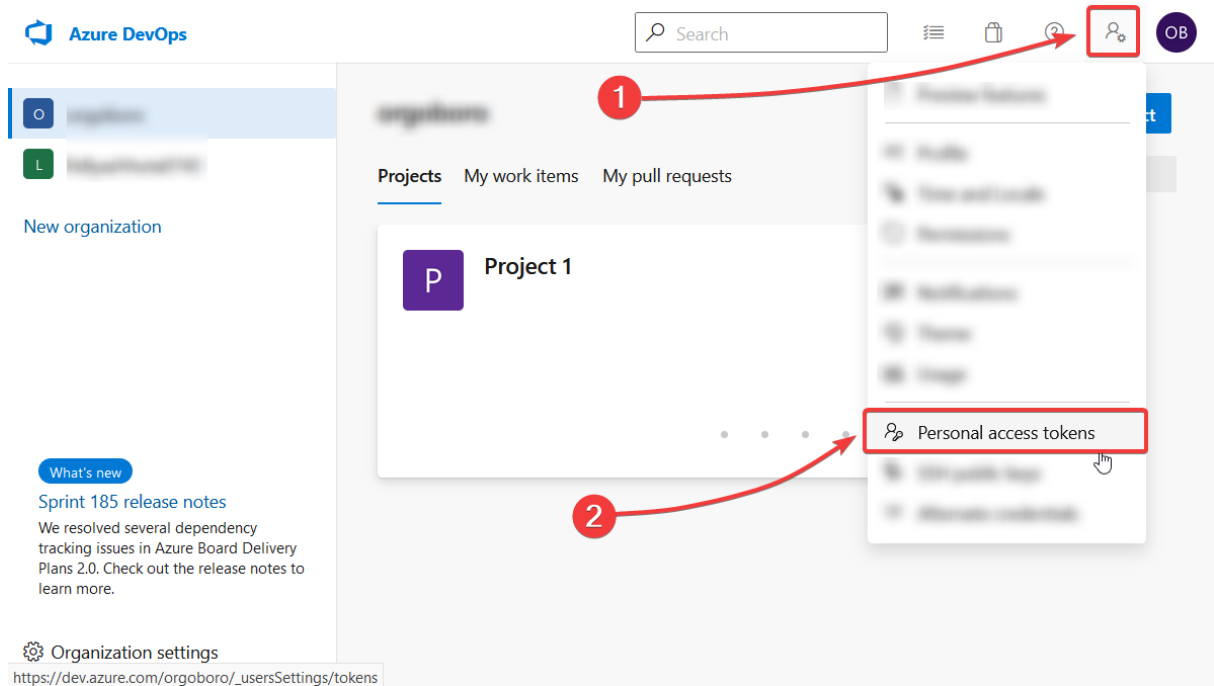


To generate an Azure DevOps personal access token:

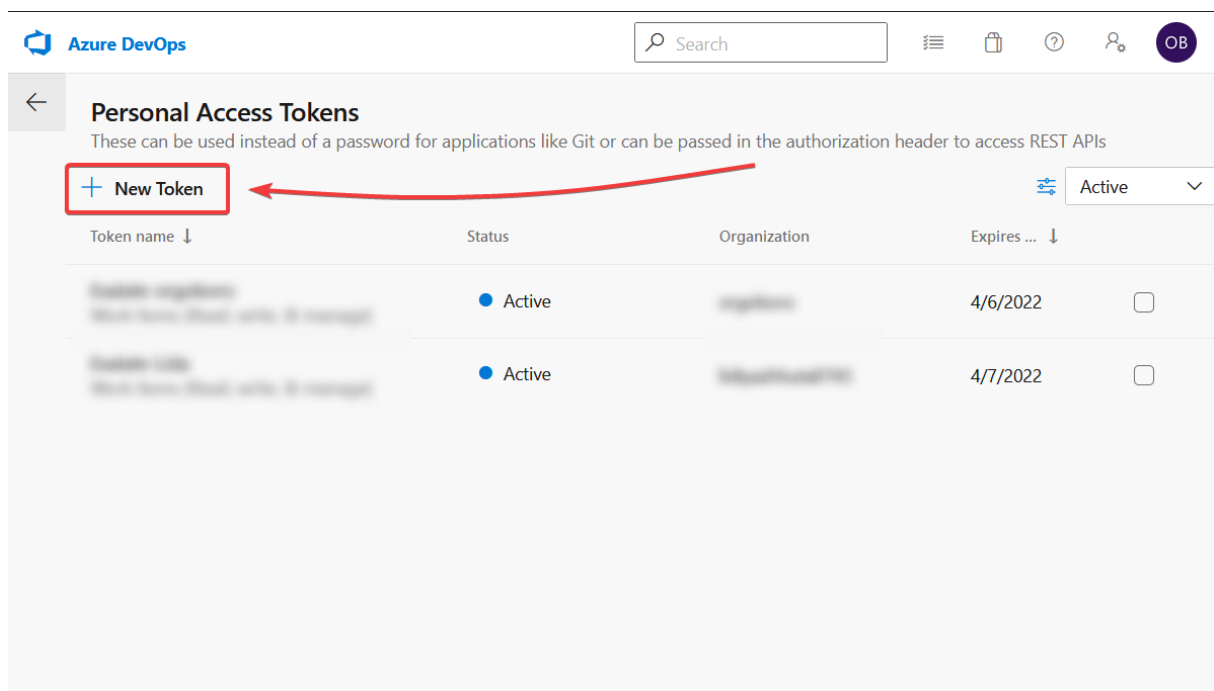
1. Sign in to your organization in Azure DevOps:

`https://dev.azure.com/{yourorganization}`

2. Navigate to **User settings → Personal access tokens**.



3. Click **New token**.



4. Choose the name for your token, select the organization where you want to use the token, and set the expiration date for the token.

Note: Set the longest expiration period for the token to keep it valid for as long as possible.

Create a new personal access token



Name

Exalate token

Organization

All accessible organizations

Expiration (UTC)

30 days

5/27/2021



Scopes

Authorize the scope of access associated with this token

Scopes ☐ Full access

☒ Custom defined

5. Select the following scopes:

- Work Items (vso.work) READ & WRITE
- Project and Team (vso.project) READ
- User Profile (vso.profile) READ
- Identity (vso.identity) READ
- Member Entitlement Management (vso.memberentitlementmanagement) READ

Note: Without this scope, Exalate is not able to sync work items.

1. Click **Create**.
2. Copy the token and save it for reuse in the future.

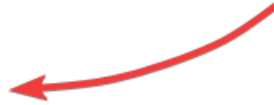
Success!



You have successfully added a new personal access token. Copy the token now!

Exalate token token

ad7uodzf67ol5ftd22ddg4gis



Warning - Make sure you copy the above token now.
We don't store it and you will not be able to see it again.

Product

[About Us ?](#)

[Release History ?](#)

[Glossary ?](#)

[API Reference ?](#)

[Security ?](#)

[Pricing and Licensing ?](#)

Resources

[Subscribe for a weekly Exalate hack ?](#)

[Academy ?](#)

[Blog ?](#)

[YouTube Channel ?](#)

[Ebooks ?](#)

Still need help?

[Join our Community ?](#)

[Visit our Service Desk ?](#)

[Find a Partner ?](#)

Close